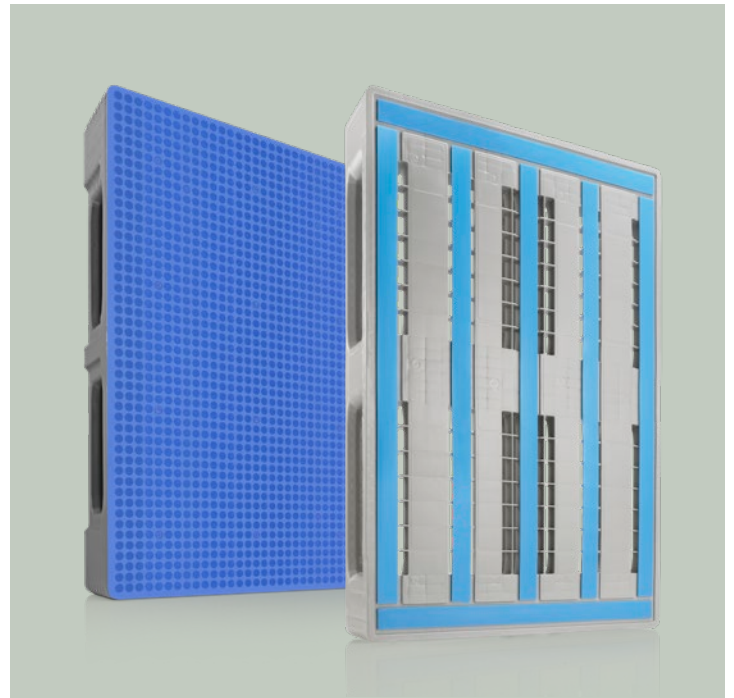


# Product Overview

Reliable solutions for all industries



# Plastic Pallets

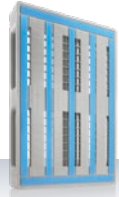
Product range for efficient pallet logistics

## L Pallets

The ultimate logistics plastic pallet

- Optimised for automated systems in intralogistics
- Ideal for use in food/food processing applications
- EURO L1®: Alternative to wooden Euro pallet, offers same functional measurements and runs in mixed operation with wood

- Options\*: - Rims
- Reinforcement profiles



**EURO L1®**  
1200 × 800 × 150 mm  
Standard colours: ■



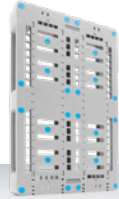
**L3®**  
1200 × 1000 × 160 mm  
Standard colours: ■

## A Pallets

Perfect for automation

- Optimised for automated systems in intralogistics
- Alternative to wooden Euro pallet, offers same functional measurements and runs in mixed operation with wood
- Perfect for non-food and industrial applications

- Options\* - Rims
- Reinforcement profiles
- Anti-slip clips (lower deck)



**A1**  
1200 × 800 × 150 mm  
Standard colours: ■

## TC Pallets

The benchmark in the closed pallet market

- Completely closed for unrivalled cleanliness and hygiene
- High stability, designed for loads of up to 2 tons
- Particularly break-resistant construction
- TC Palgrip®: Version with full-surface anti-slip deck for unique load safety

- Options\*: - Rims
- Reinforcement profiles



**TC1**  
1200 × 800 × 160 mm  
Standard colours: ■ ■ ■ ■



**TC1 Palgrip®**  
1200 × 800 × 160 mm  
Standard colours: ■ ■ ■ ■



**TC3/TC3-5**  
1200 × 1000 × 160 mm  
Standard colours: ■ ■ ■ ■



**TC3/TC3-5 Palgrip®**  
1200 × 1000 × 160 mm  
Standard colours: ■ ■ ■ ■

## CR Pallets

Maximum performance

- Heavy-duty pallet for tough applications and permanently high loads
- Extremely robust with low deflection
- Large-scale anti-slip segments offer high load safety

- Options\*: - Rims
- Reinforcement profiles



**CR1**  
1200 × 800 × 160 mm  
Standard colours: ■ ■ ■ ■



**CR3/CR3-5**  
1200 × 1000 × 160 mm  
Standard colours: ■ ■ ■ ■



**CR4/CR4-5**  
48 × 40 × 5,9"  
(1219 × 1016 × 150 mm)  
Standard colours: ■ ■

## E Pallets

Performance across all industries

- Ideal for a variety of application areas
- Reliable thanks to robust design
- Suitable for heavy loads

- Options\*: - Rims
- Reinforcement profiles
- Anti-slip clips (lower deck)



**E3/E3-5**  
1200 × 1000 × 160 mm  
Standard colours: ■

## H Pallets

A benchmark in hygiene

- Standard in the food processing industry with closed runners
- Ideal for applications with medium loads
- EURO H1: Exchangeability thanks to GS1 certification

- Options\*: - Rims



**EURO H1**  
with central box  
retainers  
1200 × 800 × 160 mm  
Standard colours: ■



**H1**  
1200 × 800 × 160 mm  
Standard colours: ■ ■



**H3**  
1200 × 1000 × 160 mm  
Standard colours: ■ ■

## CS Pallets

Multi-talented across many industries

- Multi-talent with many equipment options
- Can be customised depending on application
- Almost completely closed top deck
- Ideal for medium loads, can be optionally equipped with 4 reinforcement profiles for higher loads

- Options\*: - Rims  
- Reinforcement profiles  
- Welded runners



**CS1**  
1200 × 800 × 150 mm  
Standard colours: ■



**CS3**  
1200 × 1000 × 150 mm  
Standard colours: ■

## D Pallets

From light weight to heavy duty loads

- Lightweight plastic pallet for light to medium loads
- Particularly reliable compared to alternatives on the market thanks to use of high-quality materials
- Customisable to suit individual applications

- Options\*: - Rims  
- Reinforcement profiles  
- Anti-slip plugs



**D1**  
1200 × 800 × 150 mm  
Standard colours: ■



**D3/D3-5**  
1200 × 1000 × 150 mm  
Standard colours: ■

## NP Pallet

Robust and nestable

- Nestable for high volume reduction when transporting empty
- Anti-slip pads on the deck for increased load safety
- Easy de-nesting with forklift truck thanks to recesses above entry openings

- Options\*: - Rims  
- Reinforcement profiles  
- Anti-slip pads (upper deck)  
- Anti-slip clips (lower deck)



**NP1**  
1200 × 800 × 146 mm  
Standard colours: ■

## SL Pallet

Robust and lightweight

- Lightweight pallet for light loads
- Long feet and ribbing in the deck ensure robustness
- Ideal for use as intermediate pallet thanks to low building height

- Options\*: - Rims



**SL1**  
1200 × 800 × 120 mm  
Standard colours: ■

# Non-Stop Pallet

Developed for the printing industry

- Euro pallet with screw-fitted thermoformed top layer
- Specially developed for use with Heidelberg printing machines
- Interruption-free processes in the production sequence
- Welded runners for smooth running on automated systems



**Non-Stop**  
1200 × 800 × 175 mm  
Standard colours: ■

# Half Pallets

Easy to handle

- CR2: Easy handling, ideal for all distribution processes
  - H2: Hygienic pallet, usable with standardised box systems (E boxes), ideal access through 800 mm side
  - D2: Robust half pallet with reinforced runners (low deflection), reliable alternative to Düsseldorfer pallet
- Options\*: - Rims (CR2, H2, D2)  
- Central box retainers (H2)  
- Anti-slip plugs (D2)



(D2)



**CR2**  
800 × 600 × 160 mm  
Standard colours: ■



**H2**  
800 × 600 × 160 mm  
Standard colours: ■



**D2**  
800 × 600 × 160 mm  
Standard colours: ■

# Pallet Collars

Easy, foldable handling

- Compatible with plastic and wooden pallets
- Locking edges for secure stacking of additional pallets
- Enables hassle-free and flexible palletising

- Options\*: - Rims



**CC2**  
814 × 619 × 290 mm  
Standard colours: ■



**CC1**  
1220 × 815 × 300 mm  
Standard colours: ■

# Pallet Lids

Stackable and precise fit

- Minimises product damage and protects your shipment
- Made from high-quality PE
- Robust construction, covers perfectly
- Suitable for use with all standard reusable boxes such as KLTs and E-boxes

- Options\*: 



**Pallet Lid**  
800 × 600 mm  
Universal Version  
Standard colours: ■ ■



**Pallet Lid**  
800 × 600 mm  
CR2 Version  
Standard colours: ■ ■



**Pallet Lid**  
800 × 600 mm  
D2 Version  
Standard colours: ■ ■



**Pallet Lid**  
1200 × 800 mm  
Standard colours: ■ ■ ■



**Pallet Cover**  
1200 × 800 mm  
(Stacking compatible with VDA cover)  
Standard colours: ■



**Pallet Lid**  
1200 × 1000 mm  
Standard colours: ■ ■ ■



**Pallet Lid**  
1200 × 1000 mm  
Flat Version  
Standard colours: ■

\* Depending on type and version, Craemer plastic pallets are available with various rim options, corrosion-protected reinforcement profiles, welded runners or Palgrip® anti-slip coating.

# Large Load Carriers

High volume and robust

## Pallet Boxes

### CB Pallet Boxes

High volume. Robust. Food grade.

- One-piece injection-moulded with 3 runners
- Reliable break resistance thanks to high wall thickness
- Smooth interior walls with large radii, ideal for bulk goods
- Integrated interlocking corners
- CB3 High: Particularly high volume

- Options\*: - Lateral trunnions (CB3 High)
- Open drain ports (CB3 High)



**CB1 470 I**  
1200 × 800 × 740 mm  
Standard colours: ■ ■ ■ ■ ■ ■ ■ ■ ■ ■



**CB3 610 I**  
1200 × 1000 × 740 mm  
Standard colours: ■ ■ ■ ■ ■ ■ ■ ■ ■ ■



**CB3 High ~1000 I**  
with runners  
1200 × 1000 × 1140 mm  
Standard colours: ■ ■ ■ ■ ■ ■ ■ ■ ■ ■



**CB3 High ~1000 I**  
with feet  
1200 × 1000 × 1140 mm  
Standard colours: ■ ■ ■ ■ ■ ■ ■ ■ ■ ■



**Lid CB1**  
1236 × 836 mm  
Standard colours: ■ ■ ■ ■ ■ ■ ■ ■ ■ ■



**Lid CB3**  
1237 × 1036 mm  
Standard colours: ■ ■ ■ ■ ■ ■ ■ ■ ■ ■



### SB Pallet Boxes

Extremely robust

- One-piece injection-moulded with 3 runners or 9 feet
- High load capacity thanks to stable base
- Euro stacking systems (all-around stacking shoulder)
- Closed version: Straight, smooth interior walls for ideal filling
- Perforated version: maximally perforated walls and base for perfect permeability

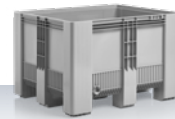
- Options\*: - Open drain ports



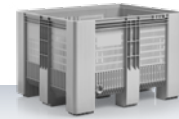
**SB3 610 I**  
with runners and closed sides  
1200 × 1000 × 790 mm  
Standard colours: ■ ■ ■ ■ ■ ■ ■ ■ ■ ■



**SB3 610 I**  
with runners and perforated sides  
1200 × 1000 × 790 mm  
Standard colours: ■ ■ ■ ■ ■ ■ ■ ■ ■ ■



**SB3 610 I**  
with feet and closed sides  
1200 × 1000 × 790 mm  
Standard colours: ■ ■ ■ ■ ■ ■ ■ ■ ■ ■



**SB3 610 I**  
with feet and perforated sides  
1200 × 1000 × 790 mm  
Standard colours: ■ ■ ■ ■ ■ ■ ■ ■ ■ ■



**Lid SB3**  
1221 × 1019 mm  
Standard colours: ■ ■ ■ ■ ■ ■ ■ ■ ■ ■



### HB Pallet Boxes

Hygienic and extremely robust

- World's first completely closed pallet box
- Rib-free construction for ideal hygiene
- Extremely easy to clean
- Ideal for heavy loads (up to 1900 kg)
- Smooth interior walls with large radii, ideal for bulk goods
- Closed runners for smooth conveyor handling

- Options\*: - Open drain ports
- Reinforcement profiles
- Anti-slip runners
- Different coloured upper part possible / lower part light grey



**HB3 620 I**  
1200 × 1000 × 790 mm  
Standard colours: ■ ■ ■ ■ ■ ■ ■ ■ ■ ■



**Lid HB3**  
1221 × 1019 mm  
Standard colours: ■ ■ ■ ■ ■ ■ ■ ■ ■ ■



# Large Load Carriers

High volume and robust

## Pallet Boxes

### KUBO

For heavy weights

- Compatible with Euro grid box, suitable for parallel or alternative use
- Guaranteed corrosion-free
- Easier handling thanks to lower tare weight (compared to metal grid box)
- Trouble-free use on all conventional conveyor systems
- Heavy-duty box for loads of up to 2100 kg
- Steel-reinforced base
- Large front drop door for easy loading and unloading

- Options\*: 



**KUBO 610 I**  
1240 × 835 × 973 mm  
Standard colours: ■

## Nestable Containers

### Nestable Large Containers

210–400 l

- Ideal for storage and transport
- Nestable, forklift accessible
- Smooth walls



**Nestable Large Container 210 l**  
Accessories:  
Lid, trolley  
790 × 605 × 685 mm  
Standard colours: □



**Stack & Nest Container 300 l**  
1200 × 780 × 630 mm  
Standard colours: ■



**Nestable Large Container 400 l**  
Accessories:  
Lid, trolley  
945 × 725 × 830 mm  
Standard colours: □



### Universal Containers / Grit Bins

210–400 l

- Ideal for various applications
- Facilitate a safe and clean transportation



**Universal Container / Grit Bin 210 l**  
Accessories:  
Lid or hinged lid  
790 × 605 × 685 mm  
with lid 775 mm  
Standard colours: ■ ■



**Universal Container / Grit Bin 400 l**  
Accessories:  
Lid or hinged lid 945 × 725 × 830 mm  
with lid 930 mm  
Standard colours: ■ ■

# Plastic Containers

First-class quality for various applications

## Transport and Stacking Boxes

25–80 l

- Reliable and hygienic safety
- Extremely versatile
- Robust and resilient



**Stacking Box 25 l**  
475 × 340 × 220 mm  
Standard colours: □



**Stacking Box 55 l**  
750 × 445 × 200 mm  
Standard colours: □



**Transport Box 40 l**  
730 × 480 × 180 mm  
Standard colours: □



**Transport Box 80 l**  
760 × 500 × 320 mm  
Standard colours: □



## Round Container

20–200 l

- Ideal for mixing, storing and transporting of goods
- Perfectly tailored to the requirements of hygiene-sensitive application areas
- Durable, robust quality



**Bin 40 l**  
Accessories:  
Lid, trolley  
Ø 420 × 445 mm  
Standard colours: □



**Bin 50 l**  
Accessories:  
Lid, trolley  
Ø 420 × 540 mm  
Standard colours: □



**Bin 75 l**  
Accessories: Lid or  
snap-on lid, trolley  
Ø 515 × 530 mm  
Standard colours: □



**Bin 110 l**  
Accessories: Lid or  
snap-on lid, trolley  
Ø 515 × 733 mm  
Standard colours: □



**Bin 200 l**  
Accessories:  
Lid, trolley  
Ø 730 × 670 mm  
Standard colours: □



**Bucket 20 l**  
Ø 380 × 280 mm  
Standard colours: □



**Bucket 30 l**  
Ø 380 × 420 mm  
Standard colours: □



**Tub 65 l**  
Accessories: Lid  
Ø 590 × 330 mm  
Standard colours: □



**Tub 85 l**  
Accessories: Lid  
Ø 628 × 385 mm  
Standard colours: □



## Large Container

125 l

- Ideal for storage and transport
- Smooth walls



**Large Container 125 l**  
Accessories: Lid  
505 × 505 × 715 mm  
Standard colours: □





## Stack & Nest Boxes / Fish Boxes

10–50 kg / 15–75 l

- Long lifetime, high manufacturing quality
- Break resistant, impact resistant
- Stackable, nestable, high volume reduction



**Stack & Nest Box /  
Fillet Box 10 kg / 15 l**  
600 × 400 × 125 mm  
Standard colours: ■



**Stack & Nest Box /  
Fillet Box 15 kg / 20 l**  
600 × 400 × 150 mm  
Standard colours: ■



**Stack & Nest Box /  
Fish Box 30 kg / 32 l**  
Accessories: Lid  
600 × 400 × 225 mm  
Standard colours: ■ ■



**Stack & Nest Box /  
Fish Box 20 kg / 35 l**  
800 × 450 × 190 mm  
Standard colours: ■ □



**Stack & Nest Box /  
Euro Fish Box  
25 kg / 40 l**  
Accessories: Lid  
800 × 400 × 225 mm  
Standard colours: ■ □



**Stack & Nest Box /  
Fish Box 40 kg / 60 l**  
800 × 450 × 270 mm  
Standard colours: ■ □



**Stack & Nest Box /  
Fish Box 50 kg / 75 l**  
890 × 560 × 235 mm  
Standard colours: ■ □



**Craebox 50 kg / 70 l**  
813 × 483 × 220 mm  
Standard colours: □

## Containers for the Construction Industry

20–200 l

- Suitable for use in various trades
- Heavy quality with high wall thickness
- TÜV tested (FMK and D-SMK)



**Bucket 20 l**  
Ø 380 × 280 mm  
Standard colours: ■



**Bucket 30 l**  
Ø 380 × 420 mm  
Standard colours: ■



**Mortar Tub 90 l**  
Accessories: Trolley  
Ø 628 × 385 mm  
Standard colours: ■



**Mortar Tub (D-SMK) 90 l**  
with coated tubular  
steel frame,  
Accessories: Trolley  
Ø 628 × 385 mm  
Standard colours: ■

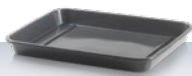


**Ready Mortar Skip  
(FMK) 200 l**  
990 × 665 × 490 mm  
Standard colours: ■ ■ ■

## Universal Trough

45 l

- Ideal for various applications
- Facilitates a safe and clean transportation



**Universal Trough 45 l**  
910 × 700 × 90 mm  
Standard colours: ■

## Poultry Transport Crate

90 l

- Integrated door on the top
- Good ventilation characteristics
- Stackable



**Poultry Transport Crate 90 l**  
840 × 495 × 295 mm  
On request  
Standard colours: ■



# Wheeled Bins

Product range for municipal and industrial applications

## MGBneo 120–360 l

- Optimised, robust construction
  - Particularly economical
  - Resource-friendly bin concept
- 
- Standard colours: ■■■■



120 l



140 l



180 l



DIN EN 840



240 l



240 l Saloon Lid  
Accessories: Divider wall



340 l / 360 l



340 l / 360 l Saloon Lid  
Accessories: Divider wall



DIN EN 840

## MGBneo<sup>4</sup> 660–1100 l

- Suitable for industrial applications and any kind of high-volume waste
  - Safe and robust lifting and emptying
- 
- Standard colours: ■■■■



660 l



770 l



1100 l



1100 l  
Lid-in-Lid



DIN EN 840

## MGBplus 120–240 l

- Exceptional stability
  - Suitable for high stress
  - Specially shaped front area
- 
- Standard colours: ■■■■



120 l



140 l



180 l



240 l



DIN EN 840

## MGB 60–80 l

- Ideal for separation of different waste streams in small households

- Standard colours: ■■■■■■



60 l



80 l



DIN EN 840

## DU 60–240 l

- Self-centering container mounting
- Fast and safe emptying
- Robust due to specially shaped front area

- Standard colours: ■■■■■■



60 l



80 l



120 l



240 l



DIN 30760

## Sheet Steel 240–1100 l

- Suitable for oily and hot waste
- Ideal for industry and garage



MGB sheet steel 240 l



MGB sheet steel 1100 l



MGB sheet steel 1100 l

DIN EN 840  
EN ISO 1461

## Sheet Steel 2500–7500/8000 l

- For applications with large waste volumes
- Extremely robust



**Rear-end loading  
container**  
2500 l, 3000 l, 5000 l, 7000 l  
(Images not to scale)



**Front-end loading  
container**  
2500 l, 4500 l, 6500 l  
(Images not to scale)



**Front-end loading  
container**  
2500 l, 5000 l, 7500/ 8000 l  
(Images not to scale)

EN 12574  
EN ISO 1461

Please note: The acronym “MGB” is a standard European waste industry term used to describe a mobile garbage bin (wheelie bin).

Depending on the bin type, numerous extra features and fittings are available to individually adjust the container to fit your requirements. Different aperture options, locking systems, individual marking and sequential numbering as well as an ergonomic lid-in-lid solution for easy lid opening from both sides are available.

# Hazardous Waste Containers

Reliable logistics solutions for the transport and disposal of hazardous waste

## 4H2

### Certification

- Certified for hazardous waste disposal
- Suitable for the production, storage and disposal of accumulators and batteries with lithium
- UN-approved according to 4H2
- Available in Euro, industrial and mega format 1600 x 1200 mm
- Smooth interior walls, large radii
- Robust construction, high wall thickness
- Strong ribbing for high load-bearing capacity



**CB1 | 470 L**  
4H2/Y438/S/.../D/BAM  
15814-CR  
① 1200 x 800 x 740 mm  
② 1236 x 836 x 765 mm  
Max. gross weight: 437,5 kg  
Standard colours: ■



**CB3 | 610 L**  
4H2/Y439/S/.../D/BAM  
15393-CR  
① 1200 x 1000 x 740 mm  
② 1237 x 1036 x 765 mm  
Max. gross weight: 438,8 kg  
Standard colours: ■



**SB | 999 L**  
4H2/Y474/S/.../D/BAM  
16337-CTP  
① 1600 x 1200 x 790 mm  
② 1619 x 1219 x 862 mm  
Max. gross weight: 473,3 kg  
Standard colours: ■



**CB1 | 470 L**  
4H2/X/.../F/CRAEMER  
BVT ...../440  
① 1200 x 800 x 740 mm  
② 1236 x 836 x 766 mm  
Max. gross weight: 440 kg  
Standard colours: ■



**CB3 | 610 L**  
11H2/X/.../F/CRAEMER  
BVT ...../444  
① 1200 x 1000 x 740 mm  
② 1237 x 1036 x 766 mm  
Max. gross weight: 444 kg  
Standard colours: ■



**SB3 | 610 L**  
11H2/X/.../F/CRAEMER  
BVT ...../452  
① 1200 x 1000 x 790 mm  
② 1218 x 1018 x 834 mm  
Max. gross weight: 452 kg  
Standard colours: ■



## 11H2

### Certification

- xxx
- UN-approved according to 11H2
- Available in Euro and industrial format
- Straight, smooth interior walls for ideal filling
- Robust construction, high wall thickness
- Strong ribbing for high load-bearing capacity



**CB1 | 470 L**  
11H2/X/.../F/CRAEMER  
BVT 40511/1800/500  
① 1200 x 800 x 740 mm  
② 1236 x 836 x 766 mm  
Max. gross weight: 500 kg  
Standard colours: ■



**CB3 | 610 L**  
11H2/X/.../F/CRAEMER  
BVT 40512/2160/600  
① 1200 x 1000 x 740 mm  
② 1237 x 1036 x 766 mm  
Max. gross weight: 600 kg  
Standard colours: ■



**CB3 High | 1000 L**  
11H2/X/.../F/CRAEMER  
BVT 40514/2880/800  
① 1200 x 1000 x 1140 mm  
② 1237 x 1036 x 1166 mm  
Max. gross weight: 800 kg  
Standard colours: ■



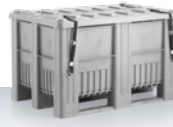
**SB3 | 610 L**  
11H2/X/.../F/CRAEMER  
BVT 40513/2160/600  
① 1200 x 1000 x 790 mm  
② 1218 x 1018 x 834 mm  
Max. gross weight: 600 kg  
Standard colours: ■



## 50H

### Certification

- UN-approved according to 50H
- Available in Euro, industrial and mega formats 1600 x 1200 mm and 2950 x 1850 mm
- Smooth interior walls, large radii
- Robust construction, high wall thickness
- Strong ribbing for high load-bearing capacity



**CB1 | 470 L**  
50H/X/.../F/CRAEMER  
BVT 40511/1800/500  
① 1200 x 800 x 740 mm  
② 1236 x 836 x 766 mm  
Max. gross weight: 500 kg  
Standard colours: ■



**CB3 | 610 L**  
50H/X/.../F/CRAEMER  
BVT 40512/2160/600  
① 1200 x 1000 x 740 mm  
② 1237 x 1036 x 766 mm  
Max. gross weight: 600 kg  
Standard colours: ■



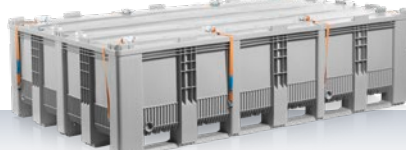
**CB3 High | 1000 L**  
50H/X/.../F/CRAEMER  
BVT 40514/2880/800  
① 1200 x 1000 x 1140 mm  
② 1237 x 1036 x 1166 mm  
Max. gross weight: 800 kg  
Standard colours: ■



**SB3 | 610 L**  
50H/X/.../F/CRAEMER  
BVT 40513/2160/600  
① 1200 x 1000 x 790 mm  
② 1218 x 1018 x 834 mm  
Max. gross weight: 600 kg  
Standard colours: ■



**SB | 999 L**  
50H/Y/.../D/BAM 16295-CTP/2560/1271  
① 1600 x 1200 x 790 mm  
② 1619 x 1219 x 862 mm  
Max. gross weight: 1271 kg  
Standard colours: ■



**SB | 2988 L**  
50H/Y/.../D/BAM 16293-CTP/2630/1383  
① 2950 x 1850 x 790 mm  
② 2965 x 1863 x 862 mm  
Max. gross weight: 1383 kg  
Standard colours: ■



① Dimensions of the pallet box L x W x H

② Dimensions of the pallet box incl. lid L x W x H

## UN1950

### Certification

- For proper disposal of empty or partially emptied aerosol cans and containers
- Triangular lid lock for secure locking
- Round slot with rubber rosette and lid
- Ventilation openings on both sides of the body

- Standard colours: ■



**MGBneo | 120 L**  
4H2/Y25/S../GB/7227  
Max. gross weight: 25 kg



**MGBneo | 240 L**  
4H2/Y40/S../GB/7226  
Max. gross weight: 40 kg



DIN EN 840

## UN3291

### Certification

- For disposal of clinical and medical waste
- Robust thanks to uniform wall thickness
- Highest product quality for durability
- Fitted with automatic lid lock

- Standard colours: ■



**MGBneo | 240 L**  
4H2/Y110/S../GB/7653  
Max. gross weight: 110 kg



**MGBneo | 340 L / 360 L**  
4H2/Y140/S../GB/7231  
Max. gross weight: 140 kg



**MGBneo+ | 770 L**  
50H/Y/.../GB/CRAEMER - 7013/0/360  
Max. gross weight: 360 kg



DIN EN 840

## 4H2

### Certification

- Container and lid moulded in one piece
- Firmly latching lid
- Rims on the top of the lid ensure secure stacking of another box
- Without lid, the box can be nested when empty
- Optional equipment with dividers and/or battery trays

- Standard colours: ■



**UN Box | 22 L / 6 kg**  
Accessories: battery tray,  
partition wall  
4H2/Y6/S../DK/  
ETi-23004/Craemer GmbH  
Max. gross weight: 6 kg



**UN Box | 22 L / 10 kg**  
Accessories: battery tray,  
partition wall  
4H2/Y10/S../DK/  
ETi-23004/Craemer GmbH  
Max. gross weight: 10 kg



# Material

## High-quality and sustainable

Craemer focuses on quality and sustainability. This begins with the general orientation of manufacturing durable and reusable products using only pure, high-quality PE that has been tested to high quality standards.

Craemer plastic pallets, pallet boxes, plastic boxes and wheelie bins are therefore all made from high-quality PE. This material offers high impact resistance, stability and durability. Compared to other plastics, PE can be used without breakages, even at low and sub-zero temperatures. It is highly resistant to acids, alkaline solutions and chemicals.

### Redemption at the end of the pallets useful service life

Sustainable and future-oriented management of natural resources is our mission. This is why our responsible interaction with the environment includes the withdrawal of products from circulation due to their age, or as soon as they are no longer in good working order.

For Craemer products, that takes a long time (our customers' pallets have been in use for 10 years or more), but even for Craemer products, there comes a time to renew the old. Just contact us and we'll be happy to help. It is a good contribution to sustainable trade to start the recycling life-cycle again with this high-grade material.

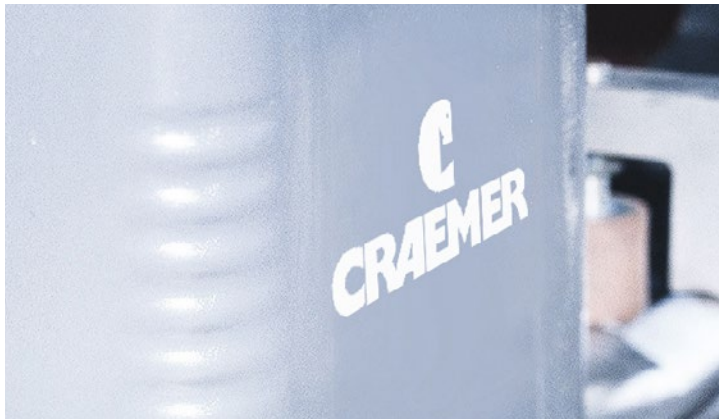
# Colours and Labelling

## Flexibility for your colour management

Need a special colour? No problem, we offer a large range of standard and special colours. All Craemer products can of course also be personalised with lettering, logo and sequential numbering. (All custom requirements may be subject to minimum order quantities and production positioning. Details available upon request.)

The following labelling options are available:

- Hot stamping of logo, lettering or sequential numbering
- Logo insert in mould



Example: Logo (hot stamping)



Example: Lettering (hot stamping)



# Quality Assurance

## In-house Testing Facilities

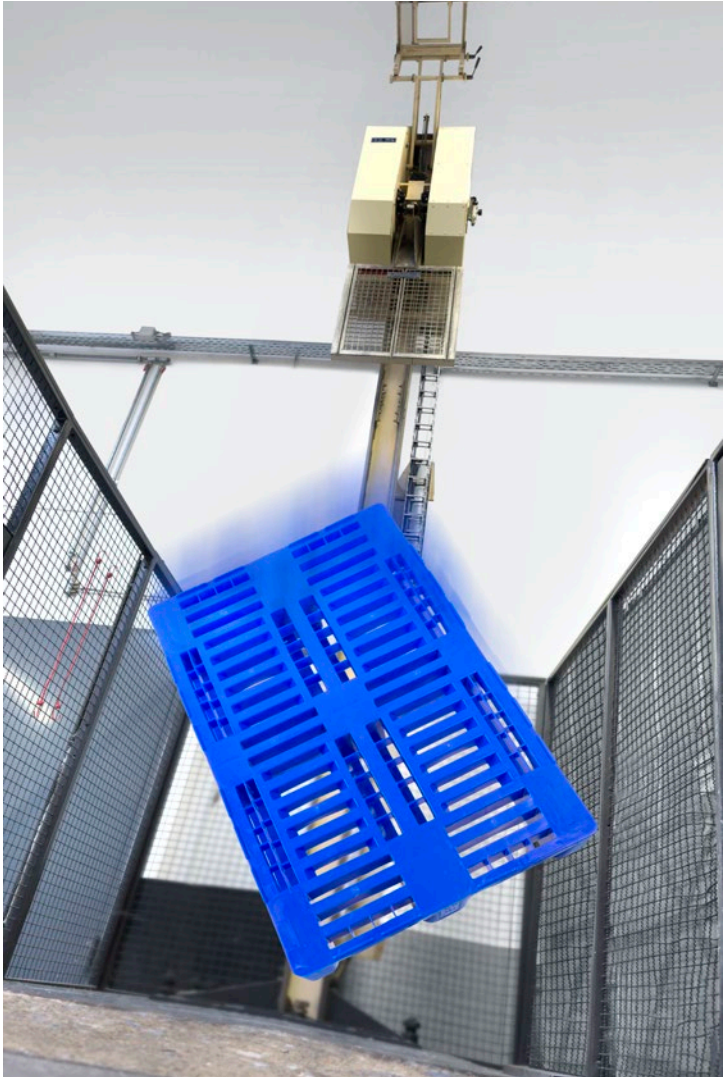
When planning and implementing product inspections, Craemer draws on its in-house expertise: Almost all the necessary testing facilities are available in our own laboratories. During the incoming goods inspection, product testing and initial sample inspection, our qualified team ensures that all items are of the required quality. For special tests or product certifications, we are in close contact with various external testing institutes.

### Active inspections plastic products

- General appearance, processing
- Ageing tests
- Torque testing
- Pressure tests
- Bending tests
- Dynamic load tests (ball drop tests, corner drop tests)
- Weight inspections
- Hardness tests
- Climate tests
- Inspections by attributes and measures
- Practical tests (Roller conveyor tests, fork lift and lift truck tests)
- All types of special audits
- Static load tests
- Visual inspections
- Tensile tests and strength testing



Lifting and emptying test



Corner drop test

## Legend

- Palgrip** Available with Palgrip® anti-slip coating as standard or optionally.
-  With integrated RFID transponders (UHF, HF) from load carrier to information carrier with huge potential for the entire supply chain.
-  ESD pallets from Craemer offer reliable protection thanks to plastics modified with additives and are also the ideal supplement for conductive boxes.
-  The products shown in this row are food-grade.
-  UN certified
-  Awarded with the GGAWB-sign of the Quality Control Association of Waste and Recycling Containers (RAL)
-  Awarded the Blue Angel for special environmental friendliness

### Standard colours:

#### Plastic Pallets

- Light grey
- Basalt grey
- Dark grey
- Black
- White
- Light blue
- Blue
- Red
- Yellow
- Red brown

#### Large Load Carriers

- Light grey
- Basalt grey
- White
- Light blue
- Blue
- Red
- Yellow
- Green
- Pale brown

#### Plastic Containers

- Light grey
- Basalt grey
- Black
- White
- Blue
- Red
- Red brown
- Yellow

#### Wheeled Bins

- Anthracite
- Blue
- Brown
- Red
- Yellow
- Green

**Do you have  
questions or  
require detailed  
information?**

**We look forward  
to your call /  
message.**

Germany (Headquarters Export Department)  
Craemer GmbH  
Brocken Strasse 1  
33442 Herzebrock-Clarholz | Germany  
Tel.: +49 5245 43-0  
E-mail: [info@craemer.com](mailto:info@craemer.com)  
[www.craemer.com](http://www.craemer.com)

