



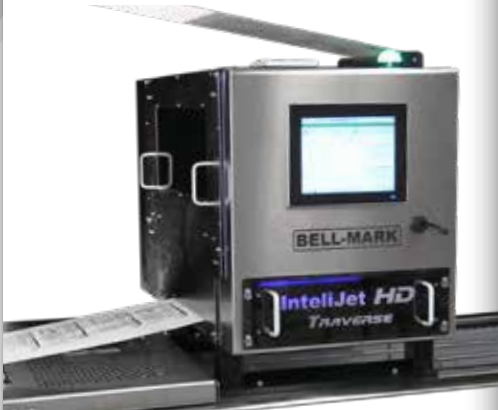
# IntelliJet **HD**

High Speed, High Definition,  
Piezo Inkjet Printing System

- High definition, 600 x 600 DPI print resolution, available in single color, two color, or full color CMYK print heads.
- Easily print all artwork, including variable data, with water-based or UV curable inks.
- User-friendly, touch-screen interface provides complete control over the print system.
- Prepare all variable data information with an extensive array of built-in editing tools.



## TRAVERSE



- Traversing mechanism, print perpendicular across a stationary web
- Perfect fit for applications with short indexes combined with a wide web

## SERVO WAS



- Our most versatile IntelliJet HD
- Intelligent servo motor provides closed loop positioning for accurate print registration

## OFF-LINE



- Continuous motion printing
- Perfect for printing on premade pouches, lid stocks, empty chipboard boxes, and unformed cartons

## EasyPrint<sup>III</sup>

Thermal Transfer Overprinter



IP65  
Rated

- Switch easily between continuous or intermittent mode
- Monitoring ribbon usage
- Preview the print layout through the 7" color touch-screen HMI
- Also offered in an IP-65 rated control box and print head for easy washdown.

## EasyPrint **s35**

- Print in continuous or intermittent mode
- Ribbon saving feature offers low cost per print
- Also offered in an IP-65 rated print head for easy washdown



IP65  
Rated

## EasyPrint **mlp**

Multi-Lane Thermal  
Transfer Printer

- Available in 2", 5" & 8.3" print heads with optional split platen feature.
- Print multiple lanes and rows with a single sweep of the print head.
- The EasyPrint MLP X model is IP65 rated, offering protection from harsh environments such as those found in the meat & poultry packaging industry.
- Also offered in a smaller footprint, the EasyPrint MLP X mini.



## EasyPrint **MLP APEX**

- Available in 2", 5" & 8.3" print heads with optional split platen feature.
- Print multiple lanes and rows with a single sweep of the print head.
- IP67 rating for extreme protection from harsh environments.
- Prints speeds up to 600mm/sec.
- 10.4" touch-screen HMI with built-in label creation software.
- Save customized traversing settings with individual labels.
- Advanced user control with multiple customized password level and full data logging for increased support.



IP67  
Rated



# Intelijet TS & Intelijet TSX<sub>4</sub>

- Easy to install, extremely versatile, with zero maintenance.
- TSX washdown print head is IP67 rated for harsh environments.
- Prints on a wide range of surfaces and can be utilized for many applications, such as carton/case coding, conveyors, intermittent motion packaging, or our semi-automatic bag loading system.



## Small Character Thermal Inkjet Printer for Marking & Coding Applications

IP67 Rated



IP67 Rated

## Intelijet TS UNO PLUS 3.0

- 10.4" touch-screen control unit
- Controls **up to 4 print heads** with individual pen ink level monitoring.
- Internet enabled network support, full data logging, multiple customized user levels & label creation software.

## Intelijet TSX Quattro<sub>2</sub>

- 10.4" IP67 rated touch-screen control unit.
- Controls **4 or more print heads** with individual pen ink level monitoring and built-in traversing controls.
- Internet enabled network support, full data logging, multiple customized user levels, & label creation software.

## Bulk Ink System



- Reduce the cost per print and minimize downtime.
- Available in 475 mL or 800 mL ink capacity.
- Can be used with stationary or traversing print heads.

## Intelijet TSi

### Thermal Inkjet Printer

- Includes everything necessary to easily install yourself and be running production within minutes.
- Direct replacement for CIJ printer at a fraction of the cost and without the maintenance requirements.
- Fits new or retrofit machinery - simply bolt on to existing packaging equipment.
- 7" color touch screen HMI includes label creation software.



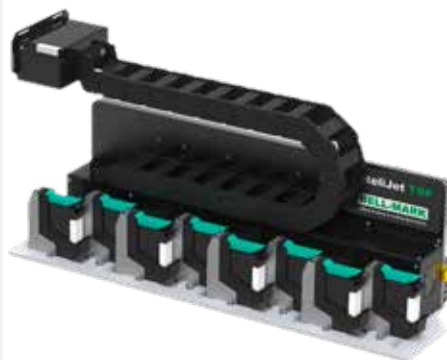
## Intelijet TS C Thermal Inkjet Carton Coder

- The Intelijet TS C's off-the-shelf integrated heads are designed for case coding.
- Specifically designed inks for printing on Kraft corrugate and other carton materials.
- Supply dynamic data from scanners and PLCs.
- Variable and fixed data capability.
- Online/Offline job creation.



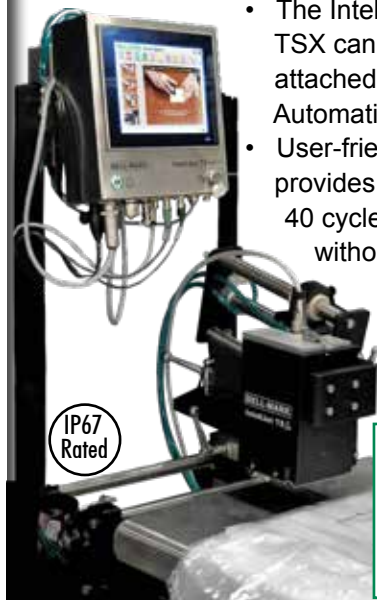
## Intelijet TS P Thermal Inkjet Printer for flexible multi-track machines

- Expandable Design - 1 to 20 lanes.
- No ribbon or moving parts.
- Fits new and retrofit FFS machinery.
- Slider mount allows for easy cartridge access and rapid replacement.



## Intelijet TSX for Semi-Automatic Bag Loader

- The Intelijet TSX can be attached to a Semi-Automatic Bag Loader.
- User-friendly design provides speeds up to 40 cycles per minute without interrupting bagging operation.



IP67 Rated



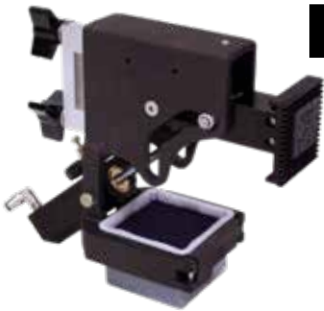
# Off-Line Feeder

Piezo InkJet • Thermal InkJet • Thermal Transfer

Feed & print preformed pouches, empty boxes & unformed cartons on demand



## Reciprocal Ink Coders



- Simple and economical choice for coding, printing and labeling on all flexible packaging films, labels and cartons.
- Easy installation on horizontal and vertical form/fill/seal, cartoners, labelers and all intermittent motion packaging machines.
- One piece casting design means no replacement parts.
- Reversible print head offers flexibility in code location.



## FlexPrint

Servo Drive  
Flexographic Printer

- Prints up to 30 cycles per minute.
- Servo drive reduces stress to package seals, allowing high speed cycles and more affordable materials to be used.
- Patented geared "S" wrap design for pinpoint registration.
- Mag-align magnetic back plate system allows for quick plate changes, accurate placement, and eliminates costly spare print cylinders and machine downtime.
- Open cavity InkWell comes standard, providing a no-mess, maintenance-free method for press ready ink and daily cleanup.



## FlexPrint II Two-Color Servo Drive Flexographic Printer



- Offers the same high-quality printing and features of the FlexPrint Servo Drive printer, in a two-color format.
- Print up to 25 cycles per minute.



## Remote Training & Support

In addition to the interactive help system & how to videos provided on our printer's user interface control units, BELL-MARK also provides remote training & support, included with all printer installations\*, as a standard feature, only requiring an internet connection.



\*excluding IntelJet TSi